

The Language Acquisition Resource Center



<http://larc.sdsu.edu/>

Creating dynamic maps while advancing
spatial and geographic knowledge

Trevor Shanklin

Director of LARC Language Labs

shanklin@mail.sdsu.edu

The Language Acquisition Resource Center



<http://larc.sdsu.edu/>

Italian 201

Italian Study Abroad

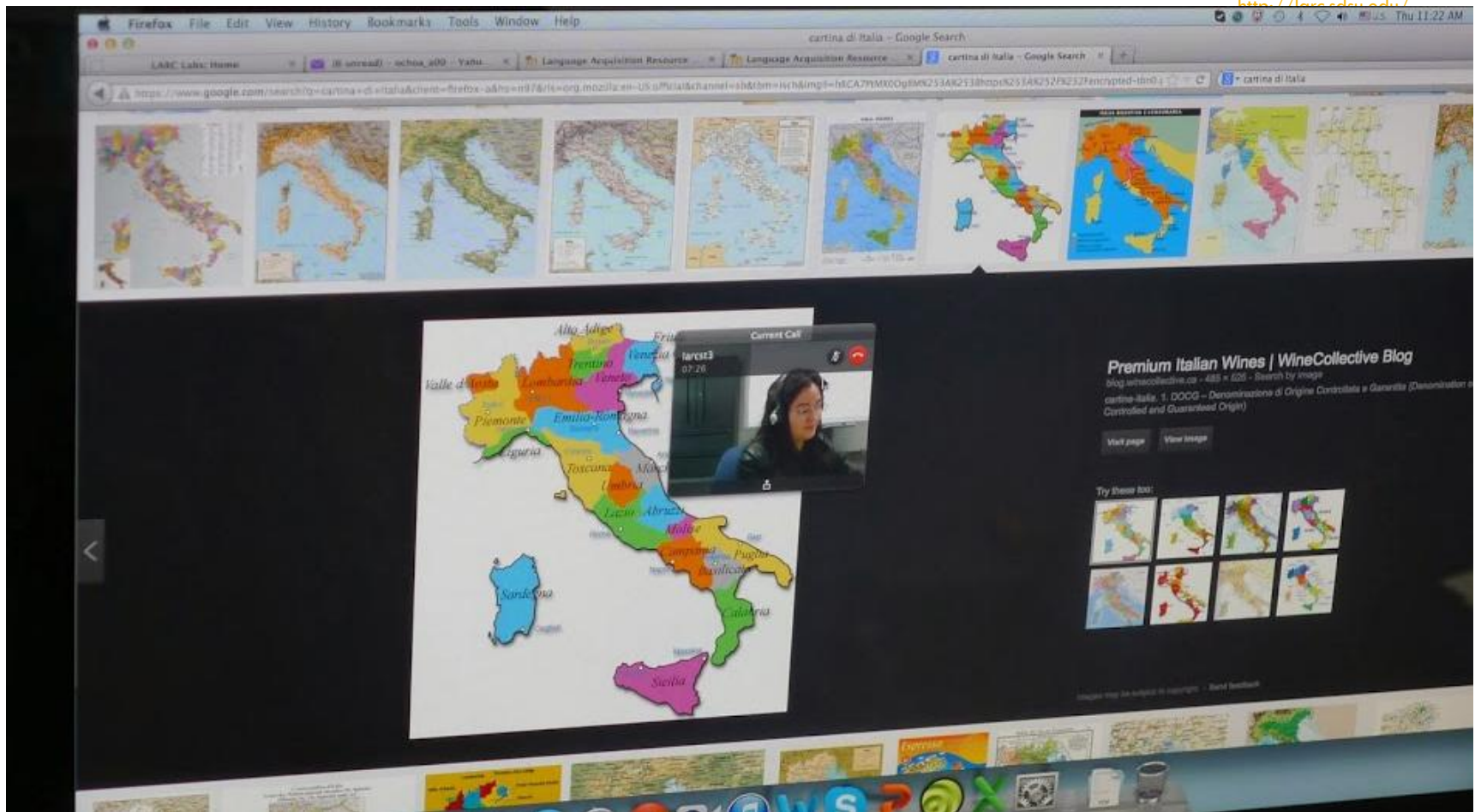
French Civilization and GPS Camera

Jeffrey's EXIF Viewer

Japanese Study Abroad (Static)

ESRI Education Conference, July 2014

Italian 201



The Language Acquisition Resource Center



Italian 201

Region

Student

Latitude

Longitude

Description

URL for Flickr Image

The Language Acquisition Resource Center



<http://larc.sdsu.edu/>

Italian Study Abroad

- ArcGis Server
- Google Form
- Moodle
- [Florence SDSU Study Abroad Summer 2013](#)

Florence Study Abroad



Taking it to the Next Level



A project at CSUMB to prepare students for study abroad using the LESCANT Model.

Through this preparation it appears students were able to attain a deeper degree of understanding, and find the means to express it

[Language Hippo](#)



Language hippo

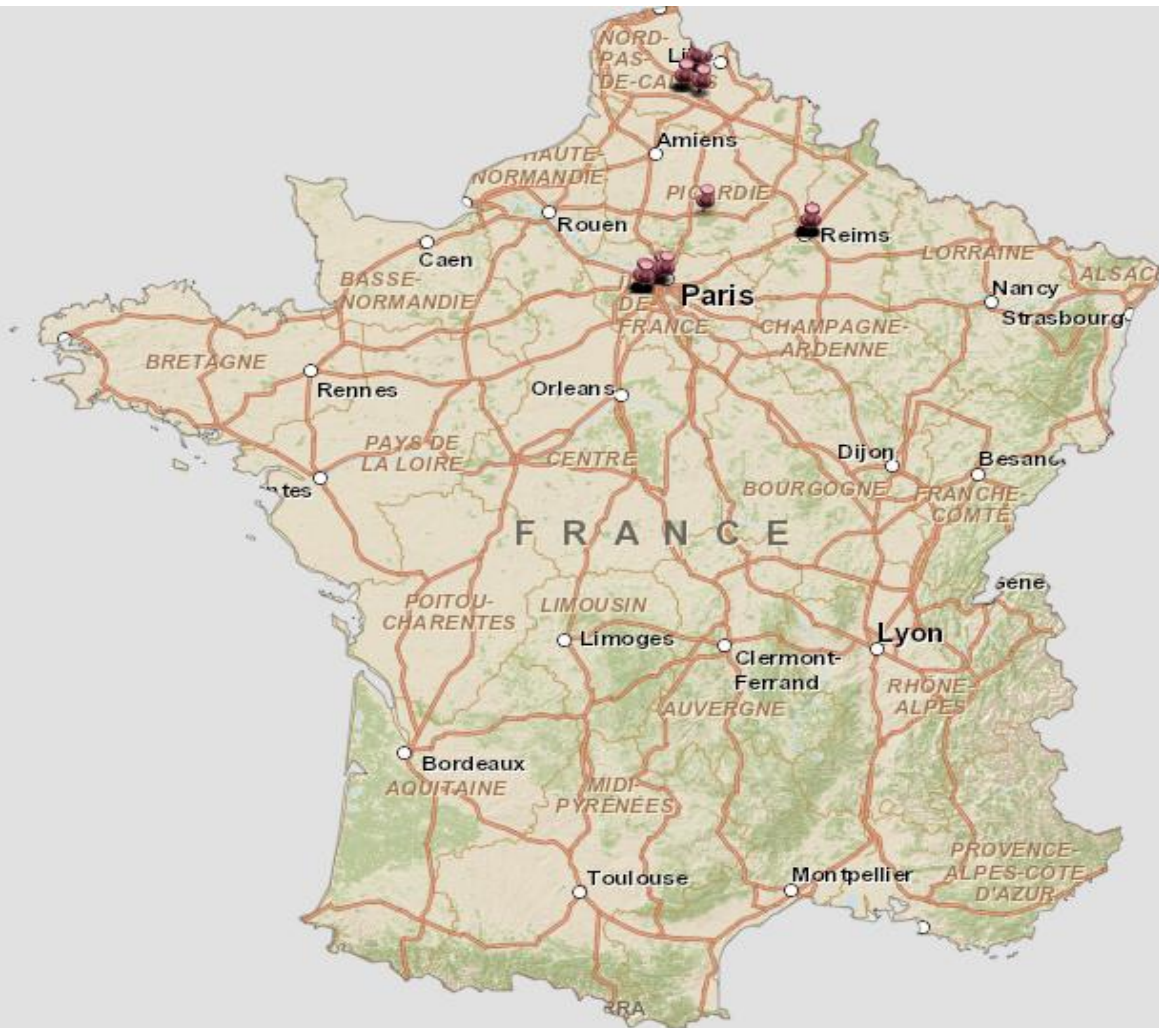
The title of this image is kind of an inside joke; language barrier in Japanese is 言葉かべ, which sounds an awful lot like 言葉かば, which is language hippo. I made this mistake once before and haven't forgotten it. Now, whether this particular language hippo is a clever joke (which I don't get) or someone genuinely wrote Mont instead of Mount and never corrected it, I'm not quite sure. I did think that this was an appropriate picture under the LESCANT language for the error, and also how no one seems to mind, because anyone who speaks English as a first language knows what it was supposed to be, and someone who speaks it as a second language probably doesn't notice (or care.)

49 September 29, 2013

© All Rights Reserved

LISCANT at CSUMB, Japanese Study Abroad

French Civ: GPS Camera



The Language Acquisition Resource Center




<http://larc.dcu.edu/>

Basic Image Information


Target file: P1000266.JPG

Camera:	Panasonic DMC-TS4
Lens:	4.9 mm (Max aperture f/3.3) (shot wide open)
Exposure:	Auto exposure, Program AE, $\frac{1}{125}$ sec, f/3.3, ISO 100
Flash:	Auto, Did not fire
Focus:	Auto AF Area Mode: Tracking Focus point highlight: [click to hide]
Date:	May 20, 2013 2:09:46AM (timezone not specified) (10 months, 1 day, 19 hours, 54 minutes, 41 seconds ago, assuming image timezone of 1 hour ahead of GMT)
Location:	Pas-de-Calais, Nord-Pas-de-Calais, France Latitude/longitude: 50° 35' 10.2" North, 2° 46' 40.8" East (50.586161, 2.777997) Map via embedded coordinates at: Google , Yahoo , WikiMapia , OpenStreetMap , Bing (also see the Google Maps pane below) Altitude: 81 m Timezone guess from earthtools.org: 1 hour ahead of GMT
File:	3,000 × 4,000 JPEG (12.0 megapixels)
Color Encoding:	WARNING: Color space tagged as sRGB, without an embedded color profile. Windows and Mac browsers and apps treat the colors randomly.

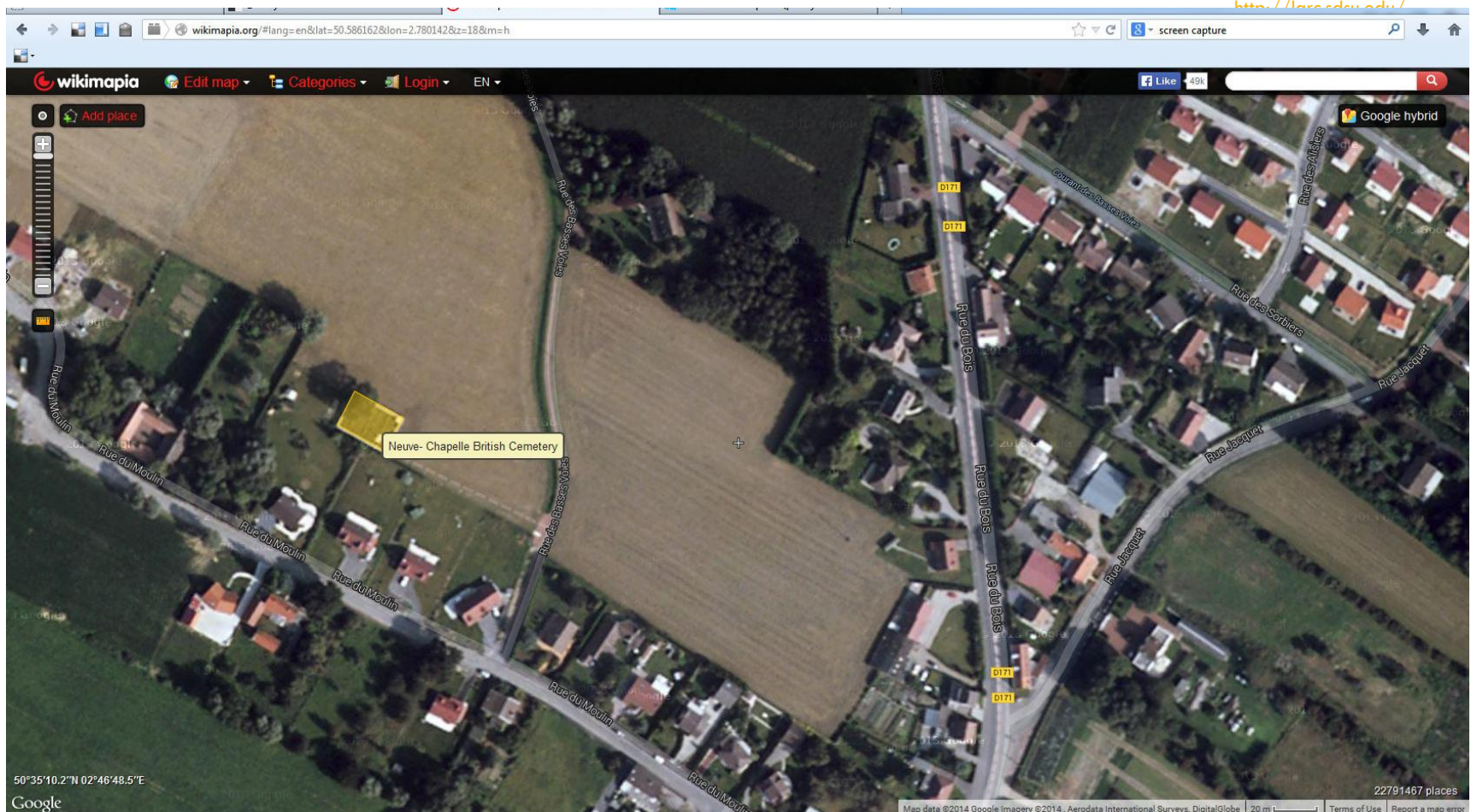
 Extracted 1440 × 1080 509-kilobyte "File:PreviewImage" JPG
Displayed here at 31% width ($\frac{1}{79}$ the area of the original)



[Click image to isolate](#); [click this text to show histogram](#)

 Main JPG image displayed here at 11% width ($\frac{1}{70}$ the area of the original)

The Language Acquisition Resource Center



The Language Acquisition Resource Center



<http://larc.sdsu.edu/>

DEPARTMENT HOME
MAJORS & MINORS
TESL/TEFL CERTIFICATES
COMPUTATIONAL LINGUISTICS CERTIFICATE
LANGUAGE PROGRAMS
Arabic
Chinese
Hebrew
Filipino
Korean
Japanese
Persian
ESL COMPOSITION FOR INTERNATIONAL STUDENTS
MA PROGRAMS
PROSPECTIVE STUDENTS
FACULTY & STAFF
STUDENT CLUB
ALUMNI
NEWS
CONTACT US

Department Office:

Location: SHW 214
Office Hours: 8:00 am - 4:30 pm
Phone: (619) 594-5268
Fax: (619) 594-4877

To view Word files you may need to download [Microsoft Word Viewer](#).

To view pdf files you may need to [download Adobe Reader](#).

Last Update: 1/9/14

日本語科へようこそ!

Japanese Language Program | Exchange Program

Faculty	Current Class Schedule
Japanese Major	Japanese Language Proficiency Test
Japanese Minor	Exchange Program
Courses	Scholarship

NEW! [Japan Exchange Program - Information Session Program \(9/13/13\)](#) (.pdf)

Graduate and undergraduate students at SDSU can enhance their education and cultural awareness by taking part in several opportunities available to study abroad. The Office of International Programs, the International Student Center (ISC), and the Department of Linguistics and Asian/Middle Eastern Languages are pleased to announce exchange opportunities for the 2014-2015 academic year with the following universities in Japan: (length of program: S = Semester, Y = Academic Year)

- Aoyama Gakuin University 青山学院大学 (Tokyo) (SDSU) – private - Y
- Chuo University 中央大学 (Tokyo) (SDSU) – private - S or Y
- Doshisha University 同志社大学 (Kyoto) (SDSU) – private - Y
- Gifu University 岐阜大学 (Gifu) (SDSU) – national - Y
- Gunma University 群馬大学 (Gunma) (SDSU) – national - Y
- Hirotsuki University 弘前大学 (Aomori) (SDSU) – national - Y
- Hosei University 法政大学 (Tokyo) (SDSU) – private - S or Y
- Kyoto Sangyo University 京都産業大学 (Kyoto) (SDSU) – private - Y
- Kyushu University 九州大学 (Fukuoka) (SDSU) – national □ New! (Fall 2014) S or Y
- Nanzan University 南山大学 (Nagoya) (SDSU) - private □ New! (Fall 2014) S or Y
- Oita University 大分大学 Oita University) (SDSU) - national - Y
- Osaka International University 大阪国際大学 (Osaka) (SDSU) – private - Y
- Osaka University of Arts 大阪芸術大学 (Osaka) (SDSU) – private – Y
- Rikkyo University 立教大学 (Tokyo) (SDSU) – Private □ New! (Fall 2014) S or Y
- Ritsumeikan Asia Pacific University (APU) 立命館アジア太平洋大学 (Beppu) (SDSU) – Private - Y
- Ritsumeikan University 立命館大学 (Kyoto) (SDSU) – Private □ New! (Fall 2014) S or Y
- Seinan Gakuin University 西南学院大学 (Fukuoka) (SDSU) – private - Y
- Tokyo University of Foreign Studies 東京外国語大学 (Tokyo) (SDSU)-national – S or Y
- Toyo Eiwa University 東洋英和学院大学 (Yokohama) (SDSU) – private - Y
- Tsukuba University 筑波大学 (Tsukuba) (Calif. State U.-Int'l Program) – national - Y
- Waseda University 早稲田大学 (Tokyo) (Calif. State U.-Int'l Program) – private - Y
- Yokohama National University 横浜国立大学 (Yokohama) (SDSU) – national - Y
- 2 private institutions available through ISEP (International Student Exchange Program) : Chukyo University 中京大学 (Nagoya) and Kansai Gaidai University 関西外国語大学 (Osaka)

[View the map to see where the programs are located](#)

The Language Acquisition Resource Center



<http://larc.dcu.edu/>

Details | Basemap | Share | Print | Measure | Find address or place

Legend

jpnUniversityCoordinatesShreya

(9) その他: 日本道路地図サービス (Japan Streetmap)

World Street Map

A map of Japan showing the four main islands: Hokkaido, Honshu, Shikoku, and Kyushu. Yellow stars are placed on the map to indicate the locations of various universities. The stars are located in the following areas: two on the northern island of Hokkaido; one in the Tohoku region of Honshu; one in the Kanto region of Honshu; one in the Chubu region of Honshu; one in the Kansai region of Honshu; one in the Chugoku region of Honshu; one in the San'in region of Honshu; one in the Chugoku region of Honshu; one in the Kyushu region; and one in the Ryukyu Islands. The map interface includes a search bar at the top right, navigation controls on the left, and a legend section on the left side.

Esri Education GIS Conference

About the Conference

Explore how geographic information system (GIS) technology fosters critical thinking skills and improves decision making in your institution. The Esri Education GIS Conference is **an ideal forum to learn, collaborate, and get updated on all things GIS** for both inside the classroom and policymaking.

Why Attend?

- Exchange experiences, ideas, and tips and tricks that worked for your colleagues.
- Get face time with the Esri Education GIS Conference experts.
- Discuss new applications, tools, skills, and research.
- Update your curriculum, teaching materials, and resources.
- Understand how to spread GIS across campus.

Who Should Attend?

Educators, administrators, researchers, librarians, and museum professionals with all levels of GIS experience.

▾ About the Conference

About the Conference



Past Proceedings

For more information, you can browse proceedings from previous Esri Education GIS Conferences: 2012, 2011, 2010, 2009, 2008, 2007, 2006, 2005.