

Food, Ethnicity, and Place

An Exploration of San Diego's Diverse Food Landscape and its Consequences on Health and Wellbeing



Fernando Bosco
Pascale Joassart-Marcelli
Department of Geography
San Diego State University

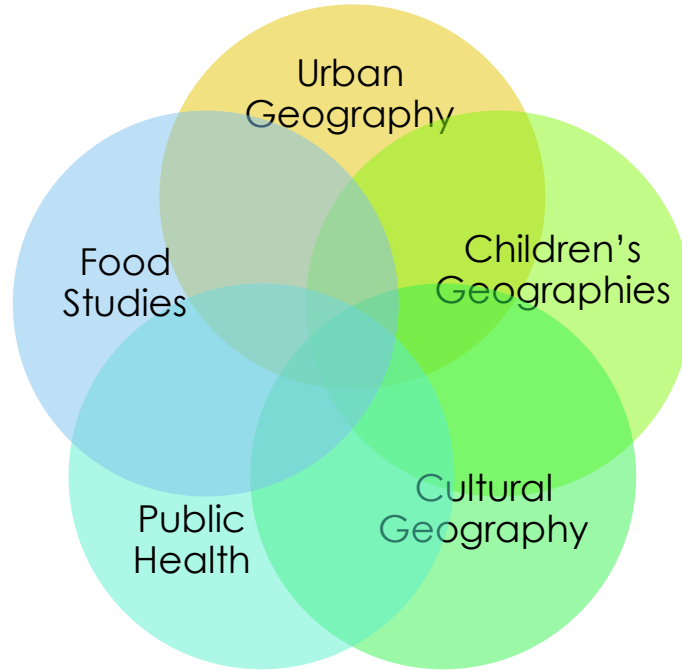
Food Beyond Physiological Need

- Food as **identity** (race, ethnicity, class, etc.)
- Food as **emotional** (pleasure, disgust, comfort, memory)
- Food as source of **income**
- Food as **political**
- **Food practices as spatially situated**

Food and Place

- The “food **environment**”
- **Place** as relational: constituted by multiple social, political-economic and emotional relations
- Our focus is on the spatiality of **everyday food practices** (including growing, purchasing, preparing, sharing and eating food)
- Home, school, neighborhood and communities **inter-connected**

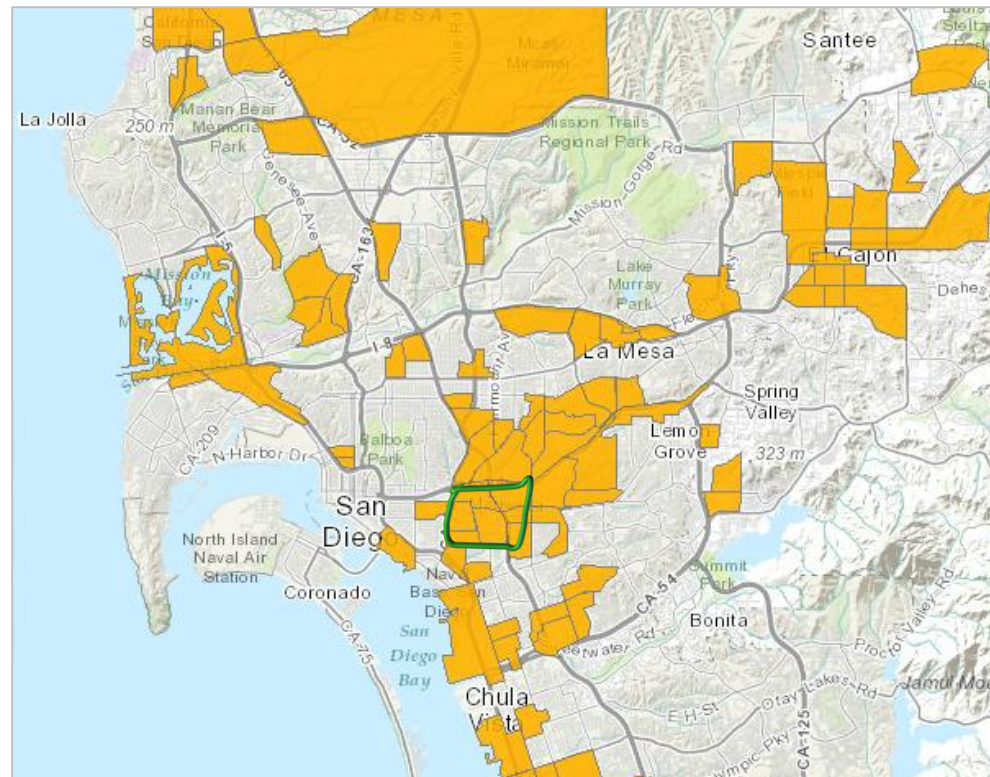
Studying Food Practices through Place



Mixed Methods

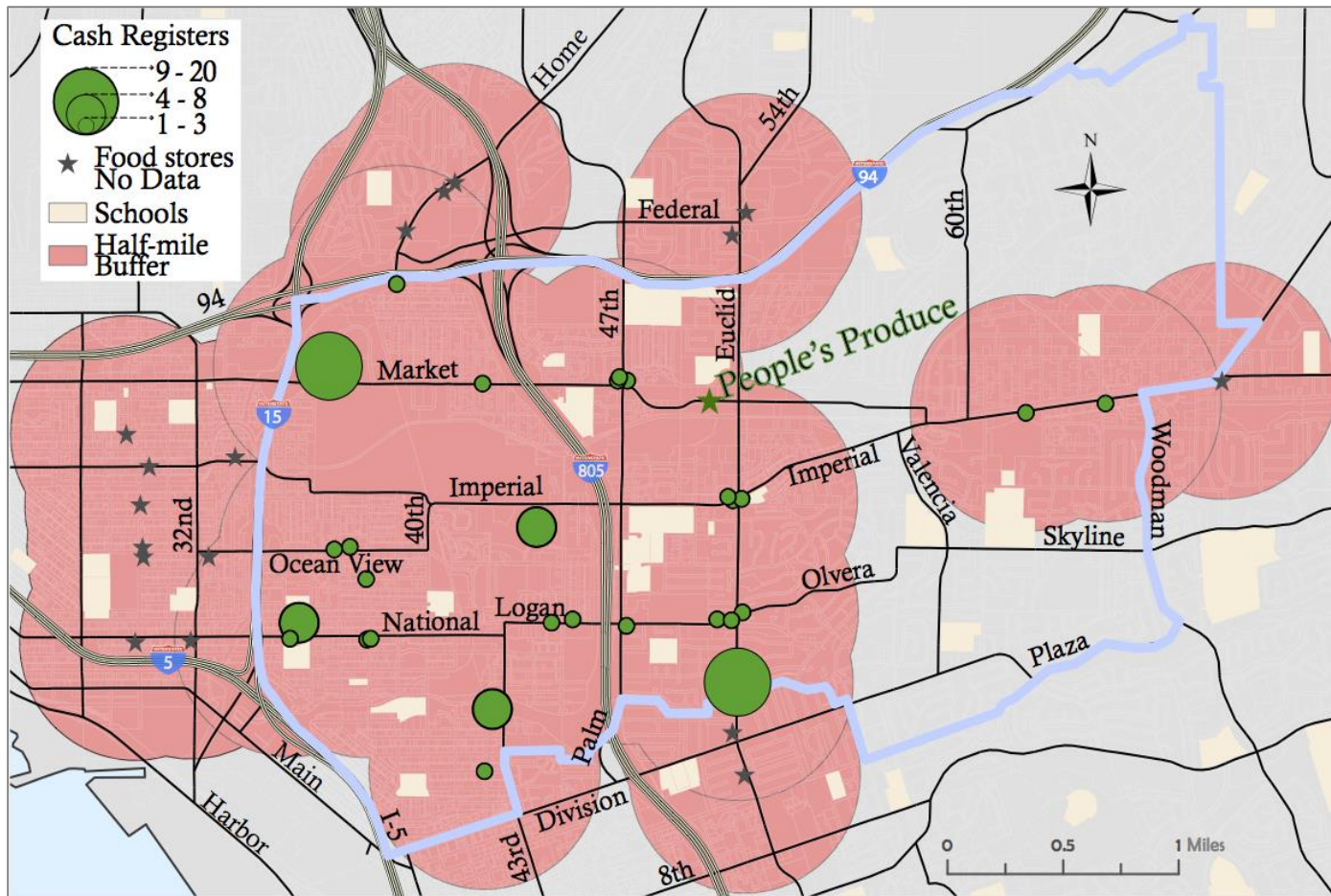
- Stage 1: Food Landscape
 - Food store and restaurant audits
 - Alternative spaces
- Stage 2: Children
 - Participatory research in schools
 - Food activity space: photography, GPS, diaries
- Stage 3: Families
 - Interviews

Southeastern San Diego: A Food Desert?



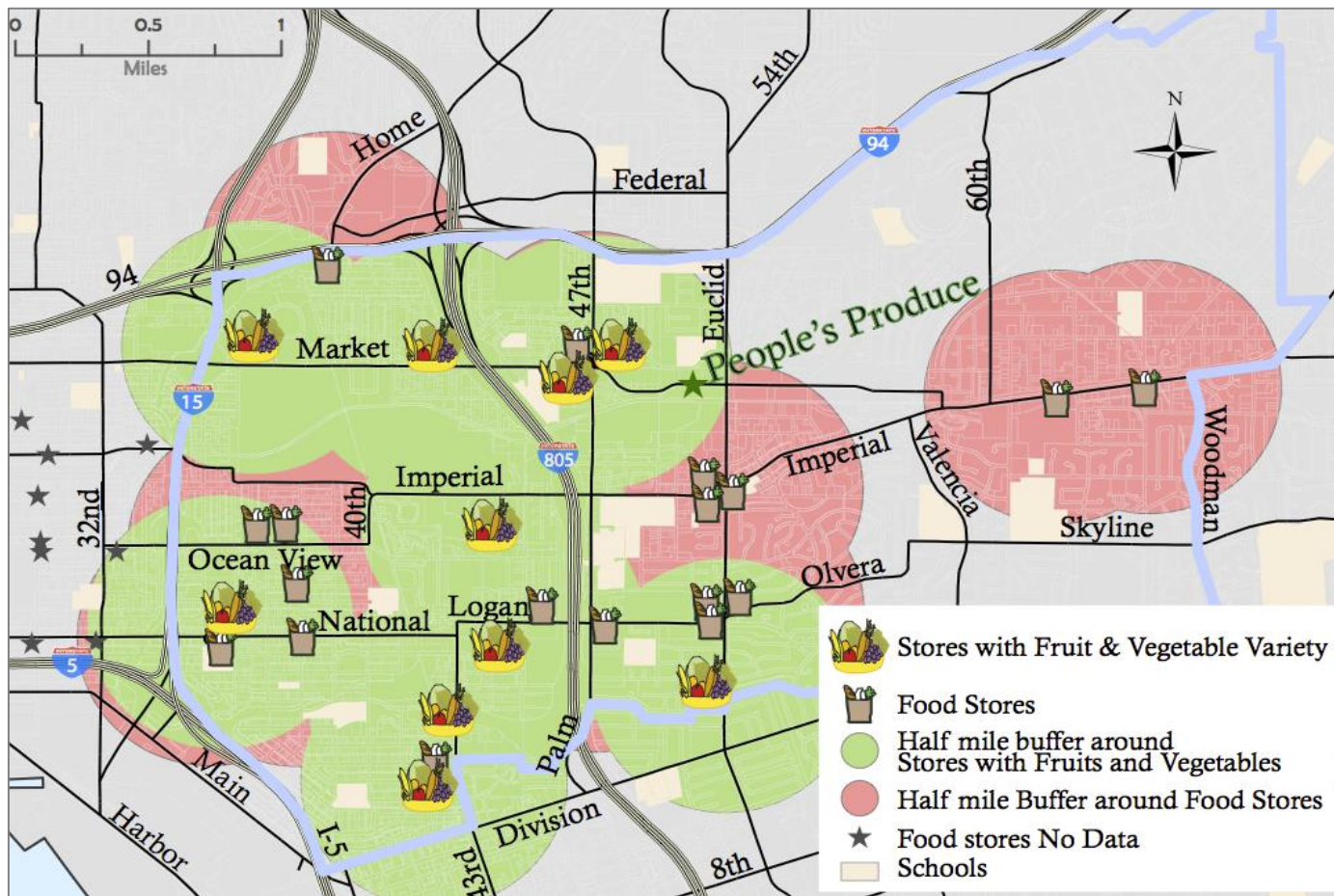
Source: USDA. 2013. Food Access Research Atlas. Economic Research Service.
http://www.ers.usda.gov/data-products/food-access-research-atlas/go-to-the-atlas.aspx#.Um_1pRaIaq

Access to Food Stores, by Size



Data Source: Joassart-Marcelli and Bosco. 2013. *Food, Ethnicity, and Place Project*. Map designed by Emanuel Delgado.

Access to Stores with Produce Availability



Data Source: Joassart-Marcelli and Bosco. 2013. *Food, Ethnicity, and Place Project*. Map designed by Emanuel Delgado.

A complex and changing food landscape that reflects political decisions, racist legacies, and local initiatives

Challenges



Opportunities



Next Steps

